



A11 Babraham to Six Mile Bottom resurfacing update

I'm writing to update you on the essential maintenance work we're carrying out on the A11 between Babraham and Six Mile Bottom. Our work includes resurfacing and sign renewals. This will ensure that the A11 remains safe and serviceable for years to come.

Work began on Monday 6 March 2023 and is expected to be complete by **Friday 22 March 2024**.

Upcoming closures and diversions

Our final phase of work will take place between **Thursday 14 and Friday 22 March**. We'll be working overnight **between 8pm and 6am**, as follows:

- A11 southbound closure between **Fourwentways** and **Granta Park**, on **Thursday 14 and Friday 15 March**.
- A11 northbound closure between **Granta Park** and **Fourwentways** (including the exit slip road from the A505), **from Monday 18 to Friday 22 March**.

Whilst the A11 is closed, traffic will be diverted as follows:

- Southbound traffic will exit the A11 at Fourwentways Interchange onto the A1307 towards Haverhill, then turn right onto Newmarket Road towards Granta Park. Join the A505 westbound at Granta Park and then join the M11 southbound at junction 10 to continue south. (**Map 1**)
- Northbound traffic on the M11 wishing to continue onto the A11 will exit at Stump Cross and take the A1301 northbound, then join the A505 eastbound at Pampisford. Exit the A505 towards Granta Park then follow Newmarket Road northbound to the A1307 Fourwentways Interchange to join the A11. (**Map 2**)

A map of the diversion can be found below.

How to find out more

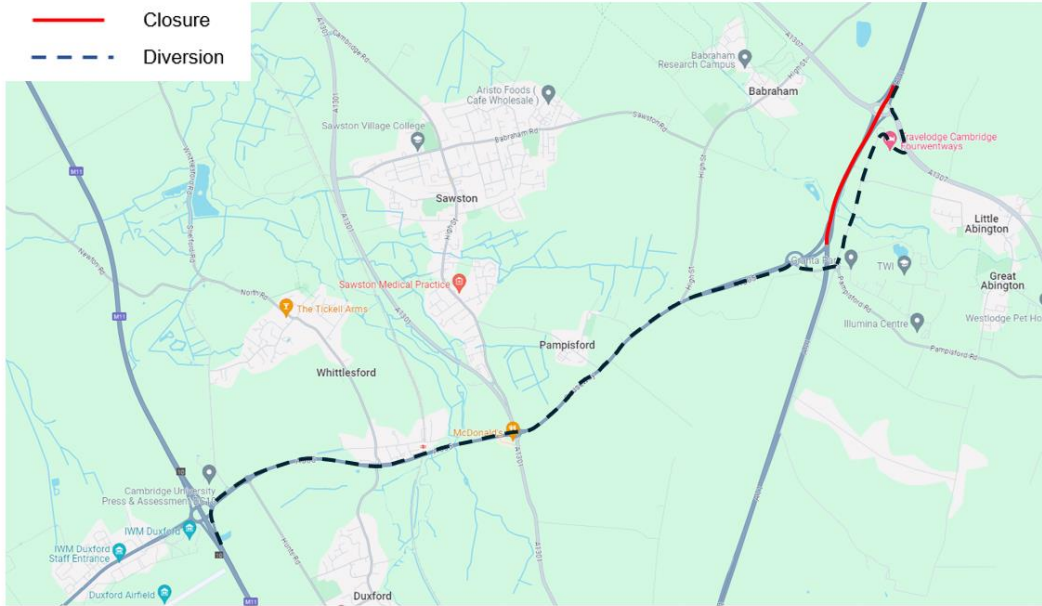
More information about our closures and diversion routes can be found on our website

at www.nationalhighways.co.uk/our-roads/east/a11-babraham-to-six-mile-bottom-resurfacing/.

To find out more about other road improvements we're carrying out across the East of England, please visit our website at www.nationalhighways.co.uk/our-work/east/.

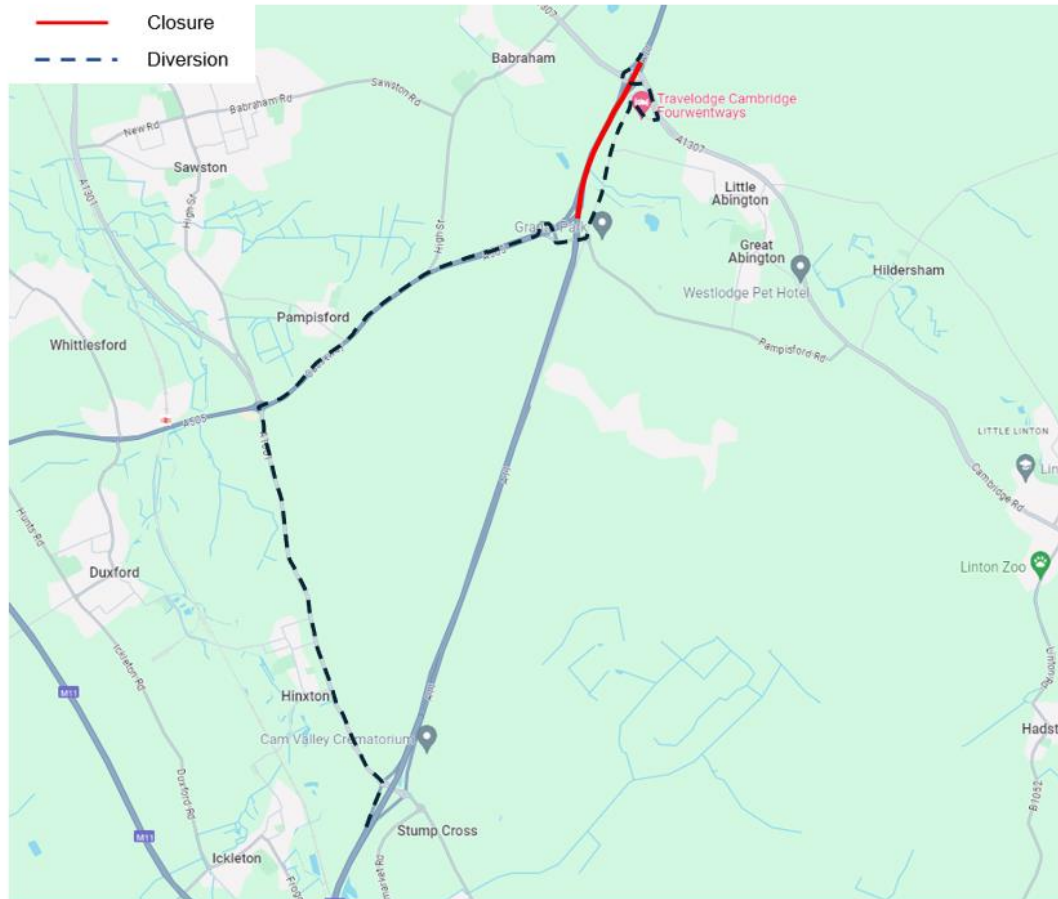
If you would like more information, please contact us on 0300 123 5000, or by email at info@nationalhighways.co.uk.

Map 1



© Google 2024

Map 2



© Google 2024